

PAPERS AND MONOGRAPHS OF THE FINNISH INSTITUTE AT ATHENS VOL. XXII

THESPROTIA EXPEDITION III LANDSCAPES OF NOMADISM AND SEDENTISM



Edited by Björn Forsén, Nena Galanidou and Esko Tikkala

© Suomen Ateenan-Instituutin säätiö (Foundation of the Finnish Institute at Athens),
Helsinki 2016

ISSN 1237-2684

ISBN 978-952-68500-0-9

Printed in Finland by Vammalan Kirjapaino

Cover: The Bronze Age site of Goutsoura seen from the south. Photo: Björn Forsén

Layout: Esko Tikkala

Contents

Preface		i
Björn Forsén and Nena Galanidou	<i>Reading the Human Imprint on the Thesprotian Landscape: A Diachronic Perspective</i>	1
Nena Galanidou, Christina Papoulia and Stephanos Ligkovanlis	<i>The Middle Palaeolithic Bifacial Tools from Megalo Karvounari</i>	29
Björn Forsén, Nena Galanidou, Christina Papoulia and Esko Tikkala	<i>Beyond Sites: Tract Finds and Hidden Landscapes</i>	59
Nena Galanidou and Christina Papoulia	<i>PS 43: A Multi-period Stone Age Site on the Kokytos Valley Bottom</i>	99
Björn Forsén	<i>The Bronze Age Site of Goutsoura: Location, Stratigraphy and Date</i>	121
Mika Lavento and Paula Kouki	<i>A Geoarchaeological Study of the Goutsoura Sediments</i>	145
Sarah Lima	<i>Grave Constructions and Landscape Modification at Bronze Age Goutsoura</i>	157
Jeannette Forsén	<i>Bronze Age Pottery from Goutsoura</i>	191
Sofia Doulkeridou	<i>The Chipped Stone Assemblage from Goutsoura</i>	211
Aristeides Papayiannis	<i>Small Finds from Bronze Age Goutsoura</i>	227
Markku Niskanen	<i>Human Skeletal Remains from the Bronze Age Cemetery of Goutsoura</i>	245
Vivi Deckwirth	<i>Faunal Remains of Goutsoura: The Early Bronze Age Strata</i>	261
Stella Macheridis	<i>Faunal Remains of Goutsoura: The Late Middle Bronze Age to Early Iron Age Strata</i>	289
Mikko Suha	<i>The Walls of Elea: Some Thoughts Concerning their Typology and Date</i>	311
Tommi Turmo	<i>The Gouriza Field: Looking beyond the Surface Scatter</i>	341
List of Contributors		361

Bronze Age Pottery from Goutsoura

Jeannette Forsén

The Bronze Age site of Goutsoura (PS 12) was excavated between 2007 and 2010, with the main emphasis concentrating on three spots named Area 1, Area 2 and Area 3. What began as four small trial trenches in 2007 turned with time into larger undertakings, the aim of which was to determine the extent and gain a better understanding of the stratigraphy and function of the site. In Area 1 we found a Late Bronze Age (LBA) terrace wall. Area 2 in its turn revealed a tumulus with a central cist grave, the burial of which can be dated to the transition from the Middle to Late Bronze Age. The tumulus was constructed on top of a Middle Bronze Age (MBA) cremation grave and a homogeneous Early Bronze Age (EBA) cultural layer. Some 75 m to the south of the tumulus in Area 3 a cemetery with cist graves was excavated, stretching in date from the very end of the MBA throughout all of LBA.¹

The Bronze Age pottery of Thesprotia as well as of Epirus in general is notoriously difficult to date due to the lack of published sites with a clear stratigraphy,² the lack of contacts and thereby influences from the well-known southern Greek pottery repertoire,³ but also the tendency to produce similar wares and shapes for many centuries. The aim with this chapter is to publish some examples of pottery from all three excavation areas, however with an emphasis on pottery originating from such strata that with the help of the stratigraphical sequence and AMS samples could be dated to specific parts of the Bronze Age.

Catalogue of pottery

The most interesting layer of Goutsoura is the undisturbed and homogenous EBA layer of Area 2, which can be fairly securely dated on the basis of four AMS samples (Fig. 11).⁴ The emphasis of this catalogue is therefore on the EBA assemblage. The cemetery in Area 3 has been dated to between 1755-1255 cal BC. As no signs of any cultural layer pre-dating the cemetery exist, the finds from this area most likely date to the LBA, although some of them also could date to the very end of the MBA or even the Early Iron Age (EIA). Because the finds from Area 3 on stratigraphical grounds can be given a certain chronological bracket I have here included a representative sample of shapes and wares.

¹ For a plan of the site as well as for a more detailed description of the excavation strategy and stratigraphy, see Forsén, this volume. In Forsén *et al* 2011, 82 I suggest that a handful of sherds should date to the Late Neolithic period, a statement that I no more support. All the pottery drawings of this chapter were made by Anna Patteri and Camilla Magnusson and later inked by Anna Patteri and Iina Musakka. I also owe thanks to Jeremy Rutter and an anonymous peer reviewer, who read through my manuscript at an early stage giving me several pertinent suggestions.

² The site Doliana being one of the few exceptions. Cf. Douzougli and Zachos 2002.

³ For general overviews, where also contacts to the south are described, see e.g. Wardle 1972 and Tartaron 2004. For an overview of the LBA in Epirus, see also Soueref 2001.

⁴ For a more detailed description of the AMS date sequence, see Forsén, this volume, Appendix.

The uppermost layers of Goutsoura clearly date to the end of the LBA or the EIA (indicated e.g. by the existence of a handful of kylix stems and wishbone handles), but are to quite a large degree mixed with earlier finds. I therefore have put much less emphasis on finds from those layers. The lowermost cultural layer in Area 1 and the smaller trenches next to it, which on the basis of the stratigraphy and one AMS sample date to the MBA, was not studied. A close study of the finds from that layer, which are rather fragmentarily preserved, would be a clear desideratum for the future.

In the following catalogue the sherds are presented in consecutive order. The find context of each entry is given in the following way: Square number, locus number (Loc.), pail number (p.) and finally the date within parenthesis. Diameters are always the inner ones. If a rim is turned out at a 90° angle it is called out-turned, if less than 90° it is called everted. The “lip” of a vessel indicates the top of the rim. Additionally the following abbreviations are used: E=exterior, I=interior, diam.=diameter, S=some, M=many, Mass=massive, A=angular, R=round, w=white, bl=black, br=brown, gr=grey, r-y=reddish-yellow, spark=sparkling, Ui=unidentifiable, CW=corded ware.

Area 1

1. Rim of open vessel. Small cup with straight sides. Diam. 11 cm. Medium-fine, unevenly fired, black core. E and I fired light brown (7.5YR 6/4), slip, poss. polished on E. Sspark silvery inclusions.

Find context: Trench 2 East, Loc. 3, p. 1 (16.7.2009).

Date: MBA-LBA.

2. Rim of jar. Diam. ca. 13 cm. Medium-fine, unevenly fired, black core. E slipped yellowish-red (5YR 5/6). I mottled reddish-yellow (5YR 7/6) to gray to black, burnished. MAwgr < 1 mm inclusions.

Find context: 494.5/510, Loc. 2, cleaning top of F101 (20.7.2009).

Cf. Wardle 1972, 513:709 (from Elaphotopos, Epirus).

Date: MBA-LBA.

3. Strap-handle with a small knob. Medium-fine, evenly fired, strong brown (7.5YR 4/6). E and I plain. MassAwgr < 1mm inclusions.

Find context: 492.5/508, Loc. 1, p. 2 (6.7.2009).

Date: LBA-EIA.

4. Vertical strap-handle with raised margins. Medium-coarse, unevenly fired, red (2.5YR 5/8), bluish gray core. E and I plain, “orange-red” ware. MA w < 8 mm inclusions.

Find context: Trench 1 West, Loc. 2, p. 1 (14.7.2009).

Cf. Wardle 1972, 492, fig. 126:557 (from Dodona, Epirus).

Date: LBA.

5. Body sherd with conical knob. Medium-fine, unevenly fired, red (2.5YR 6/8), bluish gray core. E and I plain, “orange-red” ware. SAW inclusions.

Find context: Trench 1 West, Loc. 2, p. 1 (14.7.2009).

Cf. Léra *et al.* 1996, 1017, fig. 14 and Gori 2011, 635, pl. XCV:SV147 (level 9B = 1900-1600 BC). The plastic “mamelons”, or, conical knobs begin during EBA (Maliq IIIa), but carry on into the EIA.

Date: LBA (indicated by the “orange-red” ware).



Fig. 1. Pottery from Area 1 (Nos. 1-8).

6. Body sherd, large open vessel, Matt-painted. Medium ware, evenly fired yellowish-red (5YR 4/6). E light reddish-brown slip (5YR 6/4). Matt black paint, possibly triple zigzag.

Find context: 495.5/510, Loc. 1, p. 1 (3.7.2009).

Date: MBA.

7. Horizontal handle, crescent shaped. Medium ware, unevenly fired, red core (2.5YR 5/8). E and I fired mottled pink (7.5YR 7/4) to red (2.5YR 6/6), plain. MAw < 5 mm, SAbrbl < 3 mm inclusions.

Find context: 496.5/511, Loc. 2, p. 1 (1.7.2009).

Cf. Bodinaku 1982, 89, 91, Tabl. II:6 (from Pazhokut tumulus 7, grave 26, Albania, dated to 13th-8th century BC).

Date: LBA-EIA.

8. Horizontal handle on rim. Medium-coarse ware, unevenly fired, bluish gray core. E and I fired mottled dark red (2.5YR 4/8) to olive green (2.5Y 6/6) to black, plain.

Find context: 496.5/511, Loc. 1, p. 2 (1.7.2009).

Cf. Wardle 1972, 506, no. 629, fig. 130:629 (from Dodona).

Date: MBA.

Area 2

9. Near-vertical rim of bowl with cord impressions. Diam. ca. 18-20 cm. Fine ware, evenly fired.

E black, poss. burnished. I fired dark gray (7.5YR 4/1), burnished. SAwblgr < 1mm, M spark silvery grits. Two additional sherds from the same vessel were found in 503/507, Loc. 5, p. 2 (29.6.2010). It is noteworthy that this vessel, as is the case with No. 12, has the impressions in perpendicular panels.

Find context: 505/506, Loc. 3, p. 1 (23.7.2009).

Cf. Wosinsky 1904, 39, pl. XVI:19 (from Debelo Brdo, Bosnia).

Date: EBA.

10. Broad strap-handle with fine cord impression. 4.8 cm wide. Medium ware, unevenly fired, mottled dark brown (7.5YR 3/3) to black, with black core. Unslipped and unburnished. MAw < 2 mm inclusions.

Find context: 505/505, Loc. 3, p. 2 (24.7.2009).

Cf. Wosinsky 1904, 39, pl. XVI:12 (from Debelo Brdo, Bosnia, a body sherd).

Date: EBA.

11. Body sherd with cord impressions. Medium-fine ware, unevenly fired, black core. E and I fired mottled reddish-brown (5YR 4/4) to black, both surfaces burnished. MAw < 4 mm inclusions.

Find context: 507/508, Loc. 4, p. 1 (15.7.2009).

Cf. Wosinsky 1904, 39, pl. XVI:12 (from Debelo Brdo, Bosnia, almost identical sherd and pattern).

Date: EBA.

12. Jar rim with cord impression in two vertical panels parallel to each other. Diam. ca. 18-20 cm. Fine ware, evenly fired black, burnished on both surfaces. SRbuff < 3mm inclusions. Two more sherds of the same vessel were found in 507/507, Loc. 4, p. 2 (16.7.2009) and 501/507, Loc. 5, p. 2 (1.7.2010).

Find context: 507/507, Loc. 4, p. 1 (17.7.2009).

Cf. Wosinsky 1904, 39, pl. XVI:19 (from Debelo Brdo, Bosnia).

Date: EBA.

13. Body sherd with cord and wedge impressions. Fine ware, unevenly fired, black core. E slip fired brown (7.5YR 5/4). I black, burnished. Very neat and precise cord impressions. The wedge impressions are also clear and neat. Swbuff < 1mm inclusions.

Find context: 505/506, Loc. 3, p. 1 (23.7.2009).

Cf. Roman *et al.* 1992, pl. XIII:4; 86:2 (from Leliceni-Muntele, Romania) and pl. II: 3, 5 (from Bogdănești, Romania).

Date: EBA.

14. Two-handled bowl, six body sherds, one strap-handle, all cord impressed (three joining fragments). Fine ware, unevenly fired, gray core, dark red skins subsurface. E black slipped, unburnished. I gray (5YR 5/1), burnished. MAw < 1 mm inclusions, Mass spark silvery grits.

Find context: 505/507, Loc. 3, p. 2 (23.7.2009).

Cf. Roman *et al.* 1992, pl. 99:1a, 100:5 from Lelicene-Muntele, Romania.

Date: EBA.

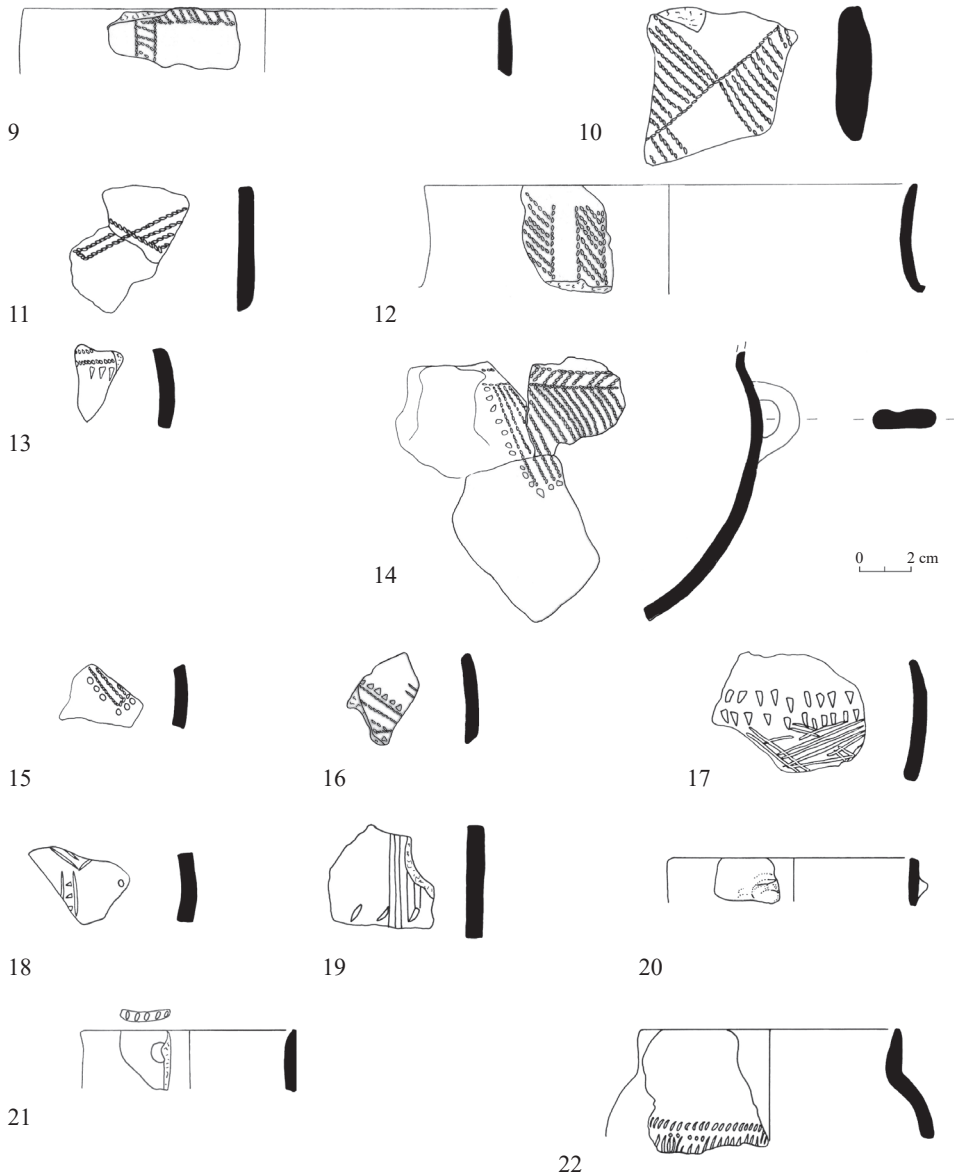


Fig. 2. Pottery from Area 2 (Nos. 9-22).

15. Body sherd with cord impression. E and I black surfaces, not polished nor burnished, dark brown subsurface skins, grey core. Mass spark silvery grits.

Find context: 505/508, Loc. 5, p. 2 (24.7.2009).

Cf. Roman *et al.* 1992, pl. 58:10, from Bogdănești, Romania (3rd period, CW), cord impressed triangular pattern lined with round holes, carefully executed.

Date: EBA.

16. Body sherd with cord impression. Medium-fine unevenly fired ware with dark red subsurface skins, grey core. E and I black, smoothed. Mass wgr < 1 mm inclusions, Mass spark silvery grits.

Cord-impressed with “stabbing” and fingernail impressions. The AMS sample Hela-2499, which gave a date of 2875-2615 cal BC, came from the same context as this sherd.

Find context: 504/503, Loc. 5, p. 3 (30.6.2010).

Cf. Roman *et al.* 1992, pl. 28:6, from Celei, Romania (3rd period, CW). The same decorative modes are involved although differently arranged.

Date: EBA.

17. Body sherd including shoulder, with wedge impressions and scoring, open vessel. Medium ware, unevenly fired mottled light brown (7.5YR 6/4) to reddish-yellow (7.5YR 6/8) with a black core. E burnished or polished above double row of wedges. I burnished. MARwbl < 2 mm inclusions, Mass spark silvery grits. The AMS sample Hela-2103, which gave a date of 2820-2670 cal BC, came from exactly the same context as this sherd.

Find context: 505/508, Loc. 5, p. 2 (24.7.2009).

Cf. Christmann 1996, pl. 120:4 (phase B = early Early Helladic II [EH II]). Same syntax, although differs in details e.g. only partly double row of, in this case, ovoid impressions preserved at Pevkakia. See also Roman *et al.* 1992, pl. 55:23 (Foltești, 3rd period, CW, but without scoring).

However, at Oradea Salca in western Romania, several sherds have a double row of wedge-shaped impressions with scoring and pellets (“Linsen”) as additional decoration. These are all deemed to be Baden culture traits (Roman and Némethi 1978, 133, pl. 52:11; 134, pl. 53:5).

Date: EBA.

18. Body sherd with incisions. Fine ware, evenly fired black. E burnished. I burnished to gloss. Swbr < 1 mm, Sspark silvery inclusions.

Find context: 507/505, Loc. 4, p. 2 (17.7.2009).

Cf. Roman *et al.* 1992, pl. 40:3, from Ezerovo, Bulgaria (3rd period, CW). Two of three individual incised elements are present albeit in another pattern. Wosinsky 1904, 100-102, pl.

CX:92 (from two burial sites in the region of Elisabethpol, Caucasus: individual incised elements are present, but in another pattern).

Date: EBA.

19. Body sherd with vertical incisions and fingernail impressions in horizontal row. Medium-fine ware, unevenly fired, black core. E fired light brown (7.5YR 6/3). I black, burnished to high gloss. SAw < 4 mm inclusions.

Find context: 509/508, Loc. 3 (burial) (15.7.2009).

Cf. Christmann 1996, pl. 19:26 (phase 3 = early EH II). The fingernail impressions on this piece occur above the vertical incisions.

Date: EBA.

20. Small cup rim, plain. Diam. 9 cm. Fine ware, evenly fired, black surfaces, fragment of horizontally placed elongated knob on E (1 cm). E and I well burn.

Find context: 509/508, Loc. 3 (burial) (15.7.2009).

Cf. Gori 2011, 338, 564, pl. XXIV: SV349 (level 8 = 2300-2000 BC).

Date: EBA.

21. Cup rim with pie-crust and round clay pellet on E. Diam. ca. 8 cm. Fine, unevenly fired. E fired mottled red-yellow-bluish grey. I dark grey (5YR 4/1). SARw < 1mm inclusions.

Find context: 509/507, Loc. 4, p. 1 (22.7.2009).

Cf. Christmann 1996, pl. 74:10 (phase 7 = late EH II, similar shape and size, but not decoration); Dragonov 1995, 231, fig. 5:17 (from Kiten, Bulgaria, similar shape, size and pellet decoration on exterior).

Date: EBA.

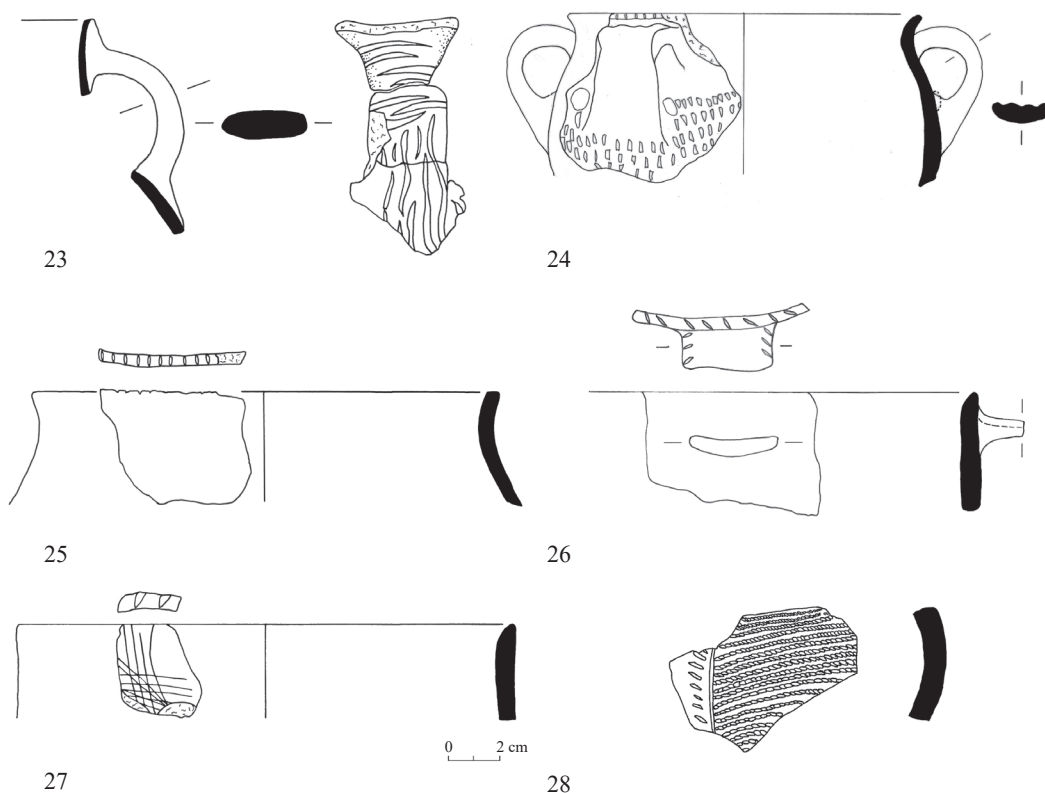


Fig. 3. Pottery from Area 2 (Nos. 23-28).

22. Jar rim with incisions on shoulder. Diam. ca. 9-10 cm. Medium ware, unevenly fired, black core. E and I fired mottled brown (7.5YR 5/3) to black, burnished. MAW < 3 mm inclusions. Find context: 507/508, Loc. 4, p. 1 (15.7.2009).

Cf. Roman 1976, 184, pl. 84:3, from Boarta, Romania (Coțofeni, phase a III a). The shape is similar although our example has another decoration on its shoulder.

Date: EBA.

23. Jug with vertical incised strap-handle (2.9 cm wide). Medium-coarse ware, unevenly fired, black core. E mottled red (2.5YR 5/6) to black, plain. I black, burnished. SAg < 5mm, SARw < 4mm, SAbl < 1mm inclusions.

Find context: 507/505 (circle), Loc. 4, p. 1 (16.7.2009).

Cf. Roman 1976, 192, pl. 94:2, from Basarabi, Romania (Coțofeni, phase a IIIa – although our example is not an amphora but a jug); Christmann 1996, pl. 4:4 (phase 1 = late EH I).

Date: EBA.

24. Two-handled bowl, incised lip, clay disc applications and wedged stabblings on shoulder. Diam. 13 cm. Medium-fine, unevenly fired, black core. E fired mottled very pale brown (10YR 7/4-8/2) to black. I fired mottled gray (10YR 6/1) to light gray (10YR 7/1) to black, well burnished. MassAw < 2 mm, SAgbuff < 2 mm inclusions.

Find context: 503/506, Loc. 5, p. 1 (30.6.2010).

Cf. Roman *et al.* 1992, pl. 37:5, from Ezerovo, Bulgaria (3rd period, CW). This pottery is called CW by Roman although there are no cord impressions visible as decoration.

Date: EBA.

25. Jar rim with incised lip, very uneven. Diam. ca. 14-20 cm. Medium-fine, unevenly fired, black core. E fired mottled dark reddish-brown (5YR 3/4) to black, probably smoothed. I black burnished. SAwr-y < 1 mm inclusions.

Find context: 507/505 (circle), Loc. 5, p. 1 (17.7.2009).

Cf. Christmann 1996, pl. 119:7 (phase B = early EH II), parallel shape and incised lip.

Date: EBA.

26. Bowl rim, incised lip, strap-handle (3.2 cm wide) incised along edges. Diam. ca. > 30 cm. Medium-fine, evenly fired, black. E and I burnished. SAw < 2 mm inclusions.

Find context: 506/507, Loc. 4, p. 1 (24.7.2009).

Cf. Christmann 1996, pl. 71:3 (phase 7 = late EH II), but angle of rim differs and the incisions on handle are lacking; Bondár 2012, fig. 12:5, a comparable bowl is published from the late copper age site (Baden culture) of Nagyút-Göböljárás II in Hungary (however the date is very early, i.e., 3630-3360 cal BC).

Date: EBA.

27. Bowl rim with pie-crust and scored surface. Diam. 18 cm. Medium ware, unevenly fired, black core. E fired light brown (7.5YR 6/3), scored surface. I fired black, smoothed. SAwbr < 2 mm, 1 w 4 mm inclusions.

Find context: 509/508, Loc. 4, p. 2 (17.7.2009).

Cf. Christmann 1996, pl. 127:4 (phase C = early and middle EH II).

Date: EBA.

28. Body sherd with cord and fingernail impressions. Fine ware, evenly fired, black. E unburnished. I burnished. SAw < 1 mm. Very finely executed cord impressions in horizontal lines, bordered by an incised vertical line and with nail-impressions on opposite side of vertical line.

Find context: 507/508, Loc. 4, p. 1 (15.7.2009).

Cf. Wosinsky 1904, pl. V:7 (from Vlădhăza in Siebenbürgen).

Date: EBA.

29. Flat base with vertical finger nail impressions. Diam. 10 cm. Medium, unevenly fired, black core. E brown (7.5YR 5/4). I black burn. SAw < 2 mm, inclusions.

Find context: 505/506, Loc. 3, p. 1 (23.7.2009).

Cf. Kilian-Dirlmeier 2005, 105 and note 232, pl. 41:61 (terminus ante quem EH II). The fingernail impressions here are not vertical, but rather horizontal.

Date: EBA.

30. Flat base of bowl with vertical finger nail impressions. Diam. 9 cm. Fine, unevenly fired, dark brown core. E fired light brown (7.5YR 6/4). I grayish brown (10YR 5/2), smoothed or polished?

Find context: 505/507, Loc. 3, p. 1 (22.7.2009).

Cf. Kilian-Dirlmeier 2005, 100, pl. 36 R2-5 (developed EH II), 101, pl. 37 R3-17 (developed EH II), 163. The Nidhri parallels are body sherds rather than bases.

Date: EBA.

31. Flat base of large storage vessel. Diam. 14-16 cm. Medium ware, unevenly fired, black core. E yellowish-red (5YR 5/6), fine, thin lines of scored surface. I plain black surface. MAwgr < 3 mm inclusions.

Find context: 505/506, Loc. 3, p. 1 (23.7.2009).

Cf. Christmann 1996, pl. 3:8, phase 1 (late EH I).

Date: EBA.

32. Horizontal lug, pierced twice vertically. Medium-coarse ware, unevenly fired, black core. E dusky red (2.5YR 4/4). I black. SAw < 1 mm inclusions.

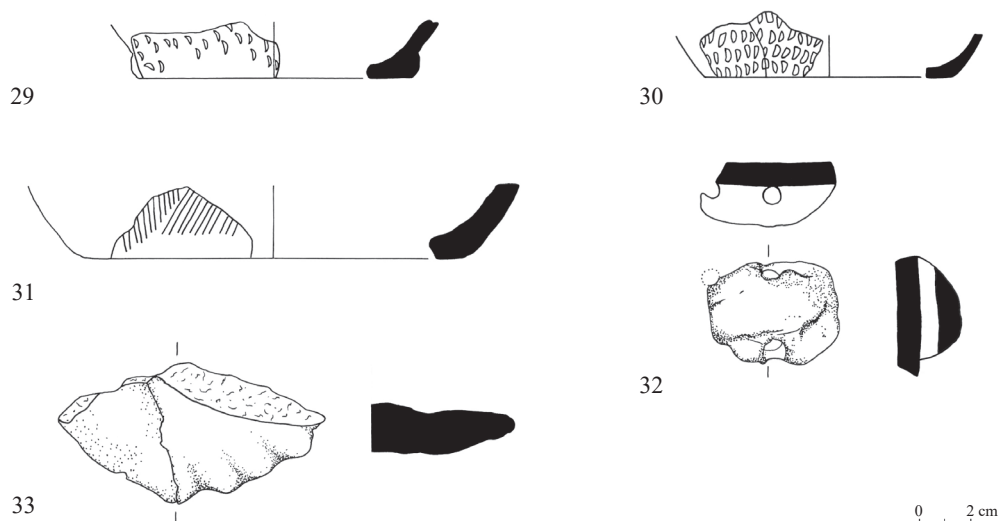


Fig. 4. Pottery from Area 2 (Nos. 29-33).

Find context: 506/507, Loc. 4, p. 1 (24.7.2009).

Cf. Christmann 1996, pl. 23:14, phase 3 (early EH II, it is noteworthy that the lug belongs to a vessel of CW); Korkuti 2006, 47, table II:2 (from Maliq IIIa-b, Albania = EH III).

Date: EBA.

33. Horizontal lug handle, crescent-shaped when viewed from above, with exterior bearing multiple finger impressions so as to produce a scalloped exterior outline. Medium-coarse ware, unevenly fired, bluish-gray core (almost black). Fired red (2.5YR 5/8), plain. MAw grits < 3 mm inclusions.

Find context: 509/508, Loc. 4, p. 1 (16.7.2009).

Cf. Benton 1947, 181, no. 83, 182, fig. 13 (Hagios Nikolaos near Astakos in Akarnania with further refs.); Weisshaar 1989, pl. 26:9 (Pevkakia, Unteres Rachmani).

Date: EBA.

34. Spoon handle. Medium-fine ware, unevenly fired, black core. Fired light-reddish brown (5YR 6/4), traces of slip (5YR 6/4), smoothed. MARw < 2 mm, SAbIbrgr > 1 mm inclusions.

Find context: 509/506, Loc. 2, p. 1 (6.7.2009).

See Forsén 2011, 66:5.

Date: EBA

35. Spoon handle with fingernail impressions and fishtail end. Medium-fine ware, unevenly fired, black core. Fired mottled yellow (10YR 8/6) to red (2.5YR 6/8) to bluish grey, lightly pol or burn. SAw < 1 mm inclusions.

Find context: 505/507, Loc. 3, p. 1 (22.7.2007).

See Forsén 2011, 66:1.

Date: EBA

36. Spoon with handle fragment. Medium-fine ware, unevenly fired, bluish gray core. Fired mottled yellow (10YR 8/6) to red (2.5YR 6/8) to bluish grey. SAw < 1 mm inclusions.

Find context: 505/507, Loc. 3, p. 1 (22.7.2007).

See Forsén 2011, 66:2. Cf. Pevkakia, pl. 84:23 (Pev. 7 Spät. = Lerna III:D= late EH II).

Date: EBA



Fig. 5. Spoons from Area 2

(Nos. 34-37).

37. Spoon handle with fishtail ending. Fine, unevenly fired dark gray core. Brown slip (7.5YR 5/3-5/4). 1 w 5 mm, MARwbr < 1 mm inclusions.

Find context: 509/508, Loc. 4, p. 2 (17.7.2009).

See Forsén 2011, 66:3.

Date: EBA

38. Complete profile of storage jar, everted rim and flat base. Diam. Ui. H ca. 34. Coarse ware, unevenly fired, gray core. E reddish yellow (5YR 6/6), plain, with a round knob at maximum diam. I dark red (2.5YR 4/6), burnished. Thickness of wall ranges 0.9-1.4 cm.

Find context: 504/505, Loc. 0-4, p. 2 (8.7.2010).

Cf. Heurtley 1939, 185, no. 264 (buff coloured from Saratsé, said to be EBA); Andrea 1999-2000, 331, fig. 20:14-15, 17 (dark gray or black coloured from Sovjan, MBA).

Date: MBA

Area 3

39. Out-turned rim of bowl. Diam. Ui. Medium ware, unevenly fired, dusky red (2.5YR 4/4), black core. E and I burnished. SAWbrbuff < 2 mm inclusions.

Find context: 511/577, Loc. 1, p. 1 (16.6.2010).

Cf. Wardle 1972, fig. 126:543 (from Dodona, Epirus).

Date: MBA-LBA.

40. Everted rim of (two-handled?) bowl. Diam. ca. 16 cm. Medium ware, evenly fired, reddish-yellow (5YR 6/6). E plain. I black slipped and burnished. MAwbr < 2 mm inclusions.

Find context: 523/577E, Loc. 0, p. 2 (18.6.2010).

Cf. Prendi 1977-1978, Tab. VI:7 (from Vodhine, Albania, but 4-handled).

Date: MBA-LBA.

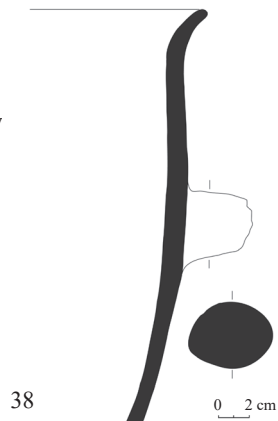


Fig. 6. MBA jar from Area 2 (No. 38).

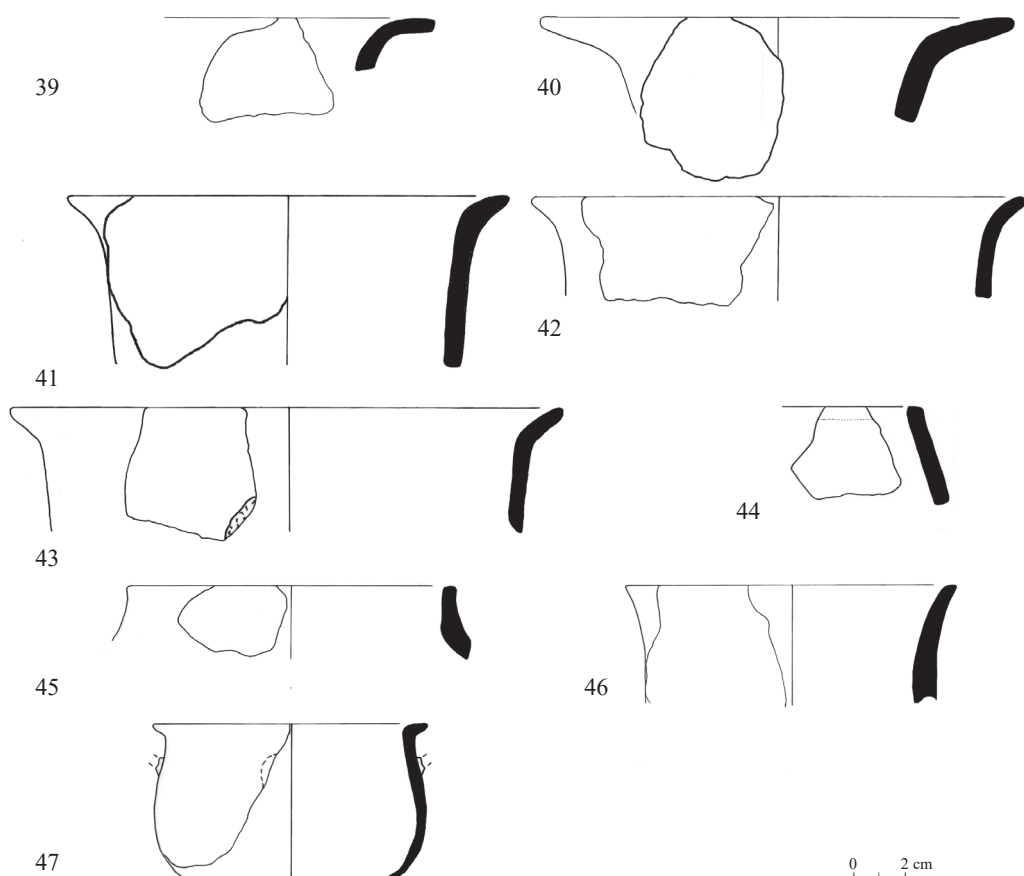


Fig. 7. Pottery from Area 3 (Nos. 39-47).

41. Everted rim of (two-handled?) deep bowl. Diam. 16 cm. Medium ware, evenly fired. E black, plain. I mottled reddish-brown (5YR 5/4) to black. MAw < 5 mm inclusions.

Find context: 523/581, Loc. 2, p. 1 (25.6.2010).

Cf. Wardle 1972, fig. 136:734 (from Mazaraki, Epirus); Prendi 1977-1978, Tab. VI:6 (from Vajzë, Albania).

Date: MBA-LBA.

42. Everted rim of (two-handled?) deep bowl. Diam. 18. Medium ware, unevenly fired, black core. E and I fired red (2.5YR 5/6), plain. I Aw 8 mm, SAwgr < 1 mm inclusions.

Find context: 525/577, Loc. 1, p. 1 (25.6.2010).

Cf. Wardle 1972, fig. 129:598 (from Dodona, Epirus); Prendi 1977-1978, Tab. VI:6 (from Vajzë, Albania).

Date: MBA-LBA.

43. Everted rim of two-handled deep bowl. Diam. ca. 21 cm. Medium ware, unevenly fired, black core. E fired reddish-brown (5YR 5/4), plain. I fired reddish brown (5YR 4/4). MARwbl < 1 mm, 2 Agr 3 mm, 1 Rbuff 6 mm inclusions.

Find context: 523/577, Loc. 8, p. 3 (30.6.2010).

Cf. Prendi 1977-1978, Tab. VI:6.

Date: MBA-LBA.

44. Plain incurved rim. Bowl. Diam. Ui. Medium ware, unevenly fired, black core. E fired yellowish-red (5YR5/6), plain. I fired dusky red (2.5YR 4/4). SAwbr < 1 mm. OBS (similar rim in 523/577, Loc. 8, p. 1 (29/6/2010) not illustrated).

Find context: 523/581, Loc. 2, p. 1 (25.6.2010).

Date: LBA.

45. Rim of closed vessel. Jar. Diam. 10-12 cm. Medium ware, unevenly fired, black core. E and I fired mottled pink (7.5YR 7/4) to black. Poorly fired, very friable, plain.

Find context: 523/579, Loc. 2, p. 5 (8.7.2010).

Date: LBA.

46. Flaring, near vertical, rim of tankard or jar. Diam. 12 cm. Medium ware, unevenly fired, black core. E and I fired mottled yellowish-red (5YR 5/6) to dark grey (5YR 5/1), plain. MARwbr < 1 mm, 1 Aw 3 mm inclusions.

Find context: 523/579, Loc. 2, p. 4 (7.7.2010).

Cf. Prendi 1977-1978, Tab. V:7 (from Maliq, Albania, but with horizontal handle on rim).

Date: MBA-LBA.

47. Out-turned rim of small cup, handle-attachment below rim, carinated near bottom. Diam. 10 cm. Medium-fine ware, unevenly fired. E and I fired mottled yellowish-red (5YR 6/8) to dark grey (5YR 4/1), plain, sandpaper feel. MassARwblgr < 1 mm inclusions (similar vessel with carination, but red slipped, in Area 2, 505/505, Loc. 2, p. 1 (23/7/2009) not illustrated, another similar rim with handle attachment was found in Area 3, 521/583, Loc. 5, p. 1 (24/6/2010) not illustrated).

Find context: 523/577, Loc. 2, p. 1 (29.6.2010).

Cf. Wardle 1972, fig. 136:732 (from Mazaraki, Epirus).

Date: LBA.

48. Everted rim of small bowl. Diam. 12 cm. Fine, unevenly fired yellowish-red (5YR 5/6), black core. Red skins under black surfaces. E and I poss. black slipped. I polished? E plain? SAgrbuff < 1 mm inclusions.

Find context: 521/589, Loc. 2E:1 (22.6.2010).

Cf. Wardle 1972, fig. 136: 731 (from Mazaraki, Epirus).

Date: LBA.

49. Out-turned rim of small bowl. Diam. ca. 12 cm. Fine, unevenly fired, yellowish-red ware (5YR 5/6), dark grey core. E and I poss. reddish-brown slipped (5YR 4/3), no gloss. SAwblgr < 1 mm inclusions.

Find context: 523/581, Loc. 0, p. 1 (14.6.2010).

Date: LBA.

50. Everted rim of small bowl. Diam. ca. 16 cm. Fine, unevenly fired, yellowish-red ware (5YR 4/6-5/6), black core. I poss. brown slipped. MRbl < 1 mm inclusions.

Find context: 525/577, Loc. 2, p. 2 (28.6.2010).

Cf. Wardle 1972, fig. 129: 602 (from Dodona, Epirus).

Date: LBA.

51. Everted rim, handle attachment (two-handled bowl?). Diam. ca. 22 cm. Medium, even fired, reddish-yellow (5YR 6/6). E and I plain. MassAblgrbuff < 1 mm, Mspark silvery inclusions.

Find context: 523/577, Loc. 8, p. 3 (29.6.2010).

Cf. Wardle 1972, fig. 135: 707 (from Elaphotopos, Epirus).

Date: LBA.

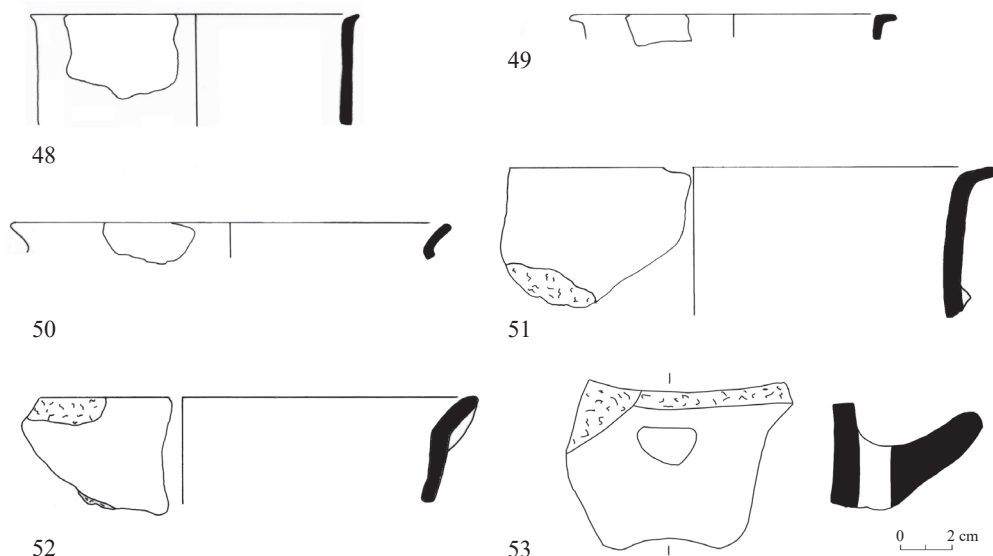


Fig. 8. Pottery from Area 3 (Nos. 48-53).

52. Everted rim, handle attachment on rim (two-handled bowl?). Diam. ca. 20 cm. Medium, unevenly fired, black core. E fired reddish-brown (5YR 6/4), plain. I fired black. MAbr < 2 mm, SAbwbl < 2 mm, Spark silvery inclusions.

Find context: 521/575, Loc. 1, p. 2 (17.6.2010).

Cf. Wardle 1972, fig. 129: 601 (from Dodona, Epirus).

Date: LBA.

53. Vertical handle, horn shaped. Coarse, unevenly fired, reddish-yellow (5YR 6/6), black core. E plain, "orange-red" ware.

Find context: 523/581, Loc. 2, p. 1 (25.6.2010).

Cf. Wardle 1972, fig. 133: 668-669 (from Dodona, Epirus); Ambrohn 2012, 67, Abb. 107:1 (from Kanlıgeçit, eastern Thrace, unstratified); unpublished parallels from Ephyra are exhibited in the Archaeological Museum of Ioannina.

Date: LBA.

Discussion

The Middle to Late Bronze Age assemblage of Area 1

This pottery is the most difficult to date, partly due to the fact that the uppermost layers are rather mixed. However, no Corded Ware or any other clearly EBA pottery was found in Area 1, which is supported by the AMS dates which span the period between 1960 and 1410 cal BC (with the exception for the uppermost cultural layer that dates to the late LBA or EIA). Disentangling the Bronze Age pottery found in connection with the terrace-wall in Area 1 has turned out to be quite difficult, although some general trends can be suggested. As we begin to know quite well what is EBA in date (Area 2) and what is LBA (Area 3) we can make some inferences as to what the MBA should look like. A systematic study of the pottery from the lowermost cultural layer in Area 1, which dates to the MBA, would clarify the picture further.

The rims in Area 1 usually have a rounded lip, compared to the pointed or square cut lips found in Area 3. From both areas the rims are usually everted or out-turned. The bases found in Area 1 are usually raised and flat, or slightly pushed up underneath. The ware from Area 1 is usually medium, i.e., either medium-fine or medium-coarse, and it is noteworthy that very little fine or coarse ware was found here.

In general the MBA pottery shapes find parallels not only at other sites in Epirus and Albania as referred to in the catalogue, but also at the Argissa Magoula in Thessaly.⁵

The Early Bronze Age assemblage of Area 2

The pottery from the EBA layer is in general dark, either black or brown, either plain or burnished, and if burnished, usually on the interior only. There is also a red slipped ware, either fine or medium, sometimes burnished, but in that case on the exterior. Lips are commonly incised. There are also a large number of scored surfaces, i.e., heavily incised strokes, in regular patterns or crisscrossing the surface. Fingernail impressions are common, most often orientated in vertical lines, but sometimes in two lines at a right angle. Impressions made by straw or small twigs are also rather common, in the form of small punctures or wedge-like impressions called “stabbing” in some archaeological literature (the result if the straw/twig was broken). There are also two (seal-?) impressed or stamped body sherds representing two different vessels (Fig. 9) for which no parallels have been found so far. Both originate from Loc. 6 (in 505/507 and 503/506). They are of fine ware with walls 0.45-0.55 thick and are black burnished on the interior, one being black-surfaced on the exterior, the other one dark reddish brown.

Lugs are included in the repertoire, either pierced twice, or in shape of larger plain horizontal lugs, or as small lugs in the shape of small knobs. Corded ware (CW) is common. At least 30 sherds were found, while three vessels were represented by at least three sherds each (in one instance joining each other). Three sherds had the white crusted filling still in the cord impressions (two were joining sherds). The fabric of the CW is usually black with many silvery sparkling inclusions. But reddish-yellow and brown

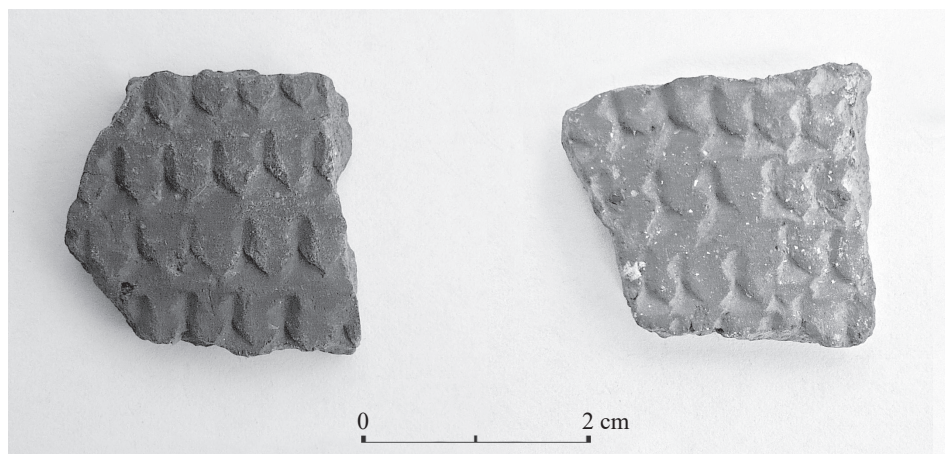


Fig. 9. (Seal-?) impressed or stamped sherds from the EBA layer of Goutsoura.

⁵ Hanschmann and Milojević 1976, 74-75, pl. 52:6, pl. 53B:2-3 and Appendix 23:17, 20, 22.

fabrics of CW also exist. It is said that CW with filled triangular patterns (e.g. Nos. 10, 11, 14, 15) are of middle European origin,⁶ but the closest parallels noted here come from Bosnia and eastern Romania. It is of some interest to note that one published vessel from the Igrîța-cave in Romania has a unique combination of CW and fingernail impressions made in vertical rows covering the lower body of the vessel.⁷ It is possible that many of our preserved bases that have fingernail impressions likewise had a CW impression on the upper part of the vessel, which now is missing.

Handles are usually strap-handles, sometimes incised and with raised margins. One crescent handle (No. 33) with a scalloped exterior outline finds a close parallel at Benton's Akarnanian site of Astakos.⁸ In fine-medium ware there is also one fabric that has a crusted exterior surface (so-called pseudo-barbotine ware) with either an incised lip or a plain rim. Some pottery bases have fingernail impressions down the sides of the vessels to the flat, or, slightly rounded base (Nos. 29-30). One common type of jug appears in dark brown or black ware with decoration starting on the shoulder downwards carrying either a deep vertically scored surface, or, fingernail impressions, or, is combed with small additional punctures. One small jug has incisions and clay pellets and a triple grooved strap-handle. All these jugs are usually well burnished on the interior.

There are in total 11 spoons in two standard sizes that we have termed the soup spoon and the tea spoon (Fig. 10). One spoon is almost intact and incised with fingernail impressions. Four spoons have a finial ending, three are well made and burnished, while



Fig. 10. EBA spoons from Goutsoura, Area 2.

⁶ Emödi 1992, 193.

⁷ Roman *et al.* 1992, 189-190, 192-194, pl. XVI:9.

⁸ Benton refers to parallels at Zygouries in Corinthia and Armenochori in Macedonia (1947, 181-182).

the remainders are rather coarse and lack any finesse.⁹ Similar spoons are found at many prehistoric sites spanning the Neolithic to Early Bronze Age period, e.g. Dikili Tash,¹⁰ Sitagroi,¹¹ and Agia Sofia Magula in Thessaly.¹²

Some flat rims in medium ware have carelessly made taenia bands below the lip. There are no out-turned rims. They are usually just square-cut and plain, or, slightly flaring rims. The parallels from Pevkakia are numerous, but contrary to the Thessalian site it is noteworthy that we lack altogether a southern Peloponnesian connection. I have not found any S-rim bowls commonly found at Doliana, which supports the idea that the material from Doliana is overall of an earlier date, likewise corroborated by the radiocarbon dates, which span the period from ca. 3770 to 2925 cal BC.¹³

Moreover, the EBA pottery assemblage from Goutsoura (PS 12) is likewise of an earlier date than that found at Sovjan, which may explain why there are so few parallels between the two sites. Only one radiocarbon date at Sovjan (Ly-7012, 2843-2416 cal BC) overlaps with the ones from the EBA layer in Goutsoura, and this seems to be an anomaly as it does not fit the other dates from level 7, which range between 2300-2000 cal BC.¹⁴ The 16 AMS dates taken from Goutsoura seem to indicate the existence of a hiatus in the occupation of the site lasting some 400 years, i.e., between 2400-2000 cal BC (Fig. 11).

Concerning the chronological phasing of the EBA pottery assemblage it seems that the early dates belonging to EH I (compared to southern Greece) all come from loci 4-5 below the tumulus, while the late group (comparable to EH II in the south) were sampled either in Trench A some 40 m to the east of the tumulus (A1 and A2) or just outside the stone peribolos of the tumulus (in D2). The two AMS dates, Hela-2103 and Hela-2499, are almost identical (2820-2670 and 2875-2615) although taken ca. 5 metres apart, but from the same cultural layer, locus 5.¹⁵ Moreover both these radiocarbon dates finally give a definite date for several sherds, found in the same find context, carrying well-known modes of surface decorations such as cord impressions, wedge-shaped impressions, and scoring (Nos. 16-17).

An important note concerning the fingernail impressed pottery (such as Nos. 29-30) is that this is now likewise securely dated within the EBA repertoire in northwest Greece. Thereby it seems as if some previously published pottery with the same decoration may have been dated too early (i.e., in the Neolithic),¹⁶ or alternatively that this décor continues throughout the Neolithic period and well into the EBA.

The EBA pottery assemblage from Area 2, under the tumulus, from what is a surprisingly homogenous cultural layer, is exceptionally important as it reflects influences, if not actual imports, from areas to the north and northwest/east. The intriguing impression is that the best parallels many times are found in areas far away, such as in Debelo Brdo

⁹ Forsén 2011, 65-67 where five spoons are published.

¹⁰ Marangou 1992, 133-143.

¹¹ Elster and Renfrew 2003, 403-414.

¹² Milojević 1976, 11, pl. 18:8 said to be of classical Dimini date.

¹³ Douzougli and Zachos 2002, 126.

¹⁴ Gori 2011, 276, table 135, 338, table 136.

¹⁵ Cf. Forsén, this volume, Appendix.

¹⁶ Cf. eg. Andrea 1999-2000, esp. 323, fig. 11 (said to be Early Neolithic); Léra 2002, esp. 100, fig. 3 (said to be Early Neolithic); Heurtley 1939, 138, fig. 5 (said to be Early Neolithic); Sofronidou 2008, esp. 15, fig. 6 (said to be late Early Neolithic to early Middle Neolithic); Kilian-Dirlmeier 2005, esp. 105, pl. 41.61 (said to exist since the Neolithic period).

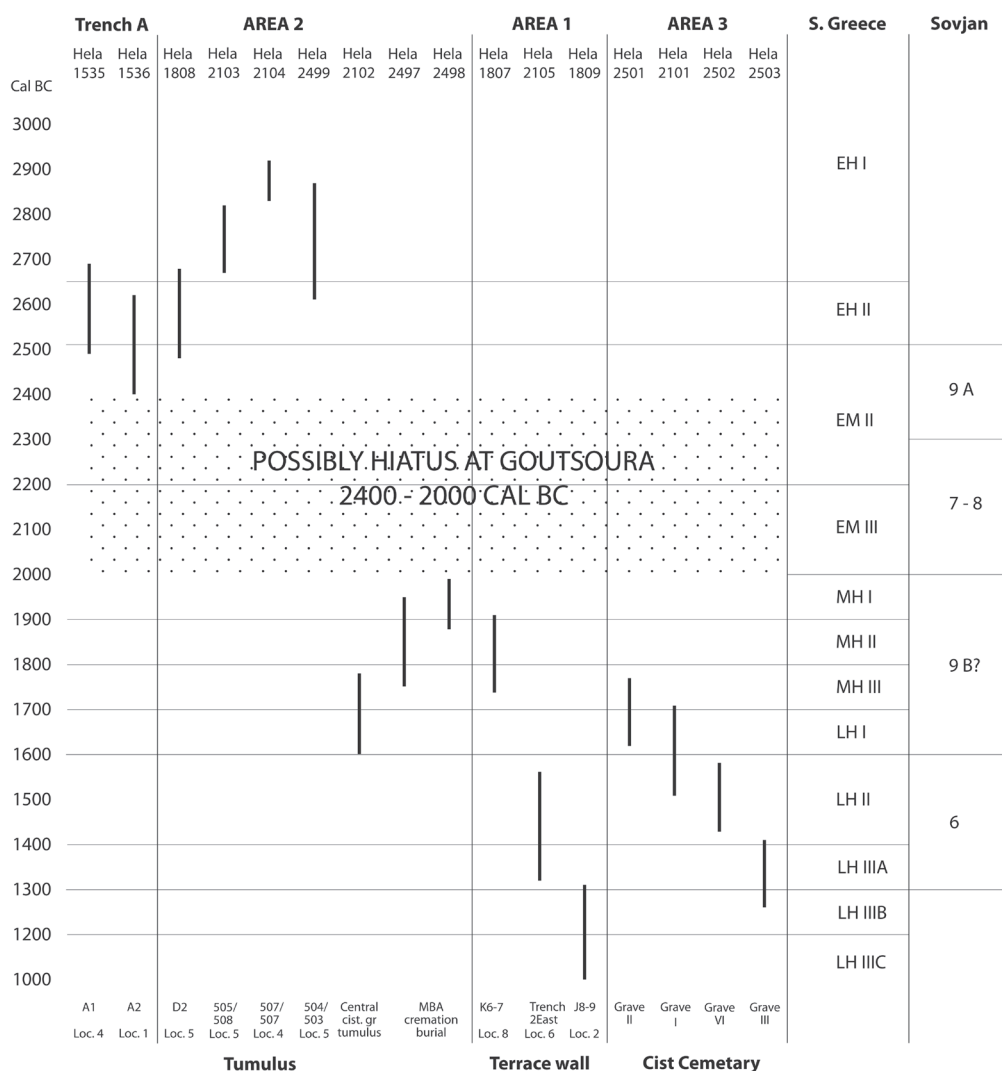


Fig. 11. The AMS dates of Goutsoura in relation to cultural phases of adjacent regions.

in Bosnia and at several sites in Romania (Lelicene-Muntele, Bogdănești, Celei, Oradea Salca, Boarta), as well as in Bulgaria (Ezerovo, Kiten). This impression might be an illusion, due to the fact that very little is known through the archaeological literature from areas adjacent to Goutsoura in Epirus. Nevertheless, it suggests that some changes within the population may be responsible for the settlement at Goutsoura.

The Late Bronze Age assemblage of Area 3.

Three cist graves from this area date within the LBA, whereas one could belong either to the very end of the MBA or the very beginning of the LBA. Therefore we must be careful and not assume that all the pottery should be dated to the LBA.

We find wishbone handles and out-turned rims of “orange-red ware”, usually with sandpaper texture, but there is also a fine “orange-red ware” that is thin-walled and

smooth. To this period belong handles rising vertically from the rim. Moreover, large horizontal handles, formed as horns, are common, and flat rims with a row of punctured holes below the lip on the exterior are also found in this context. The latter rims are also present in Area 1.

Another ware, pink or reddish-orange with a porous texture, occurs here, as do flaring rims, a vertical handle with a deep groove, as well as relief decoration in the form of small plastic pellet(s) on the exterior. Cooking ware with flat rims and taenia bands rather carelessly executed are also part of what can be termed the LBA assemblage.

Bibliography

- Ambronn 2012 = M. Ambronn, 'Die frühbronzezeitliche Keramik aus den Grabungen 1994-1998', in M. Özdoğan and H. Parzinger (eds.), *Die frühbronzezeitliche Siedlung von Kanlıgeçit bei Kırklareli. Ostthrakien während des 3. Jahrtausends v. Chr. im Spannungsfeld von anatonischer und balkanischer Kulturentwicklung* (Archäologie in Eurasien 27), Berlin 2012, 53-147.
- Andrea 1999-2000 = Z. Andrea, 'Kërkimet arkeologjike në Shqipëri: 1991-1999. Rrëti i Korçës', *Iliria* 29, 1999-2000, 328-339.
- Benton 1947 = S. Benton, 'Hagios Nikolaos near Astakos in Akarnania', *BSA* 42 (1947), 156-183.
- Bodinaku 1982 = N. Bodinaku, 'Varreza tumulare e pazhokut', *Iliria* 12 (1982), 49-101.
- Bondár 2012 = M. Bondár, 'The Late Copper Age Settlement at Nagyút-Göböljárás II (Questions on the Periodisation of the Baden Culture)', in *Antaeus* 31-32 (2012), 303-374.
- Christmann 1996 = E. Christmann, *Die deutschen Ausgrabungen auf der Pevkakia-Magula in Thessalien II. Die frühe Bronzezeit* (BAM 29), Bonn 1996.
- Douzougli and Zachos 2002 = A. Douzougli and K. Zachos, 'L'archéologie des zones montagneuses: modèles et interconnexions dans le Néolithique de l'Épire et de l'Albanie méridionale', in G. Touchais and J. Renard (eds.), *L'Albanie dans l'Europe préhistorique* (BCH Suppl. 42), Paris 2002, 111-143.
- Dragonov 1995 = V. Dragonov, 'Submerged Coastal Settlements from the Final Eneolithic and the Early Bronze Age in the Sea around Sozopol and Urdoviza Bay near Kiten', in D.W. Bailey and I. Panayotov (eds.), *Prehistoric Bulgaria (Monographs in World Archaeology 22)*, Madison, Wisconsin 1995, 225-241.
- Elster and Renfrew 2003 = E.S. Elster and C. Renfrew (eds.), *Prehistoric Sitagroi. Excavations in Northeast Greece 1968-1970 2. The Final Report* (Monumenta Archaeologica 20), Los Angeles 2003.
- Emödi 1992 = I. Emödi, 'Die Schnurkeramik aus der Igrîta- und Izbîndîş-Höhle', in P.I. Roman, A. Dodd-Oprişescu and P. János, *Beiträge zur Problematik der schnurverzierten Keramik Südosteuropas* (Internationale Interakademische Kommission für die Erforschung der Vorgeschichte des Balkans 3), Mainz am Rhein 1992, 192-194.
- Forsén 2011 = J. Forsén, 'Spoons to Fill the Cups', in W. Gauss, M. Lindblom, P.A. Smith and J. Wright (eds.), *Our Cups are Full. Pottery and Society in the Aegean Bronze Age* (BAR-IS 2227), Oxford 2012, 65-67.
- Forsén et al. 2011 = B. Forsén, J. Forsén, K. Lazari and E. Tikkala, 'Catalogue of Sites in the Central Kokytos Valley', in B. Forsén and E. Tikkala (eds.), *Thesprotia Expedition II. Environment and Settlement Patterns* (PMFIA XVI), Helsinki 2011, 73-122.
- Gori 2011 = M. Gori, *Between the Adriatic Sea and the Aegean: the South-Western Balkans during the Late 3rd and Early 2nd Millennium BC in the Light of the Excavations of Sovjan (Albania) and Sveta Nedela (Republic of Macedonia-FYROM)*, Unpubl. PhD diss., University of Heidelberg and University of Sorbonne 2011.

- Hanschmann and Milojević 1976 = E. Hanschmann and V. Milojević, *Die deutschen Ausgrabungen auf der Argissa-Magula in Thessalien III. Die frühe und beginnende mittlere Bronzezeit*, Bonn 1976.
- Heurtley 1939 = W.A. Heurtley, *Prehistoric Macedonia. An Archaeological Reconnaissance of Greek Macedonia (West of the Struma) in the Neolithic, Bronze and Early Iron Age*, Cambridge 1939.
- Kilian-Dirlmeier 2005 = I. Kilian-Dirlmeier, *Die Bronzezeitlichen Gräber bei Nidri auf Leukas* (Römisch-Germanisches Zentralmuseum. Forschungsinstitut für Vor- und Frühgeschichte, Monographien 62), Mainz 2005.
- Korkuti 1971 = M. Korkuti, 'Vendbanimi prehistorik i Trenit', *Iliria* 1 (1971), 31-48.
- Korkuti 2006 = M. Korkuti, 'Early Bronze Age. Milutin Garašanin's Important Work and the Research of Albanian Archaeology', in N. Tasić and C. Grodzdanov (eds.), *Homage to Milutin Garašanin*, Belgrade 2006, 31-57.
- Léra *et al.* 1996 = P. Léra, F. Prendi and G. Touchais, 'Sovjan (Albanie)', *BCH* 120 (1996), 995-1026.
- Léra 2002 = P. Léra, 'Les rapports culturels entre l'Albanie du Sud-Est, l'Égée et l'Europe du Sud-Est à l'époque néolithique', in G. Touchais and J. Renard (eds.), *L'Albanie dans l'Europe préhistorique* (BCH Suppl. 42), Paris 2002, 97-110.
- Marangou 1992 = C. Marangou, 'Les cuillères', in *Dikili Tash. Village préhistorique de Macédoine orientale I. Fouilles de Jean Deshayes (1961-1975)* (BCH Suppl. XXIV), Paris 1992, 122-143.
- Milojević 1976 = V. Milojević, 'Die Grabung auf der Agia Sofia-Magula', in V. Milojević, A. von den Driesch, K. Enderk, J. Milojević-von Imbusch and K. Kilian, *Die deutschen Ausgrabungen auf Magulen um Larisa in Thessalien 1966: Agia Sofia-Magula, Karagyös-Magula, Bunar Baschi*, Bonn 1976, 4-14.
- Prendi 1977-1978 = F. Prendi, 'L'âge du bronze en Albanie', *Iliria* 7-8 (1977-1978), 27-58.
- Roman 1976 = P. Roman, *Cultura Coțofeni* (Biblioteca de Arheologie 26), Bucharest 1976.
- Roman and Némethi 1978 = P. Roman and I. Némethi, *Cultura Baden în România*, Bucharest 1978.
- Roman *et al.* 1992 = P.I. Roman, A. Dodd-Oprițescu and P. János, *Beiträge zur Problematik der schnurverzierten Keramik Südosteuropas* (Internationale Interakademische Kommission für die Erforschung der Vorgeschichte des Balkans 3), Mainz am Rhein 1992.
- Sofronidou 2008 = M. Sofronidou, 'Ο προϊστορικός λιμναίος οικισμός του Δισπηλίου Καστοριάς. Μία πρώτη εισαγωγή', *Anaskamma* 1 (2008), 1-25.
- Soueref 2001 = K. Soueref, *Μυκηναϊκές μαρτυρίες από την Ήπειρο*, Ioannina 2001.
- Tartaron 2004 = T.F. Tartaron, *Bronze Age Landscape and Society in Southern Epirus, Greece* (BAR-IS 1290), Oxford 2004.
- Wardle 1972 = K.A. Wardle, *The Greek Bronze Age West of the Pindus*, unpubl. PhD diss., University of London 1972.
- Weisshaar 1989 = H.-J. Weisshaar, 'Die Keramik von Talioti', in *Tiryns* XI, Mainz 1989, 1-34.
- Wosinsky 1904 = M. Wosinsky, *Die inkrustierte Keramik der Stein- und Bronzezeit*, Berlin 1904.